



MONTHLY MEMBERSHIP PROGRESS REPORT

District 324A2

Results as of: 09/30/2018

GMT: N S SANKAR

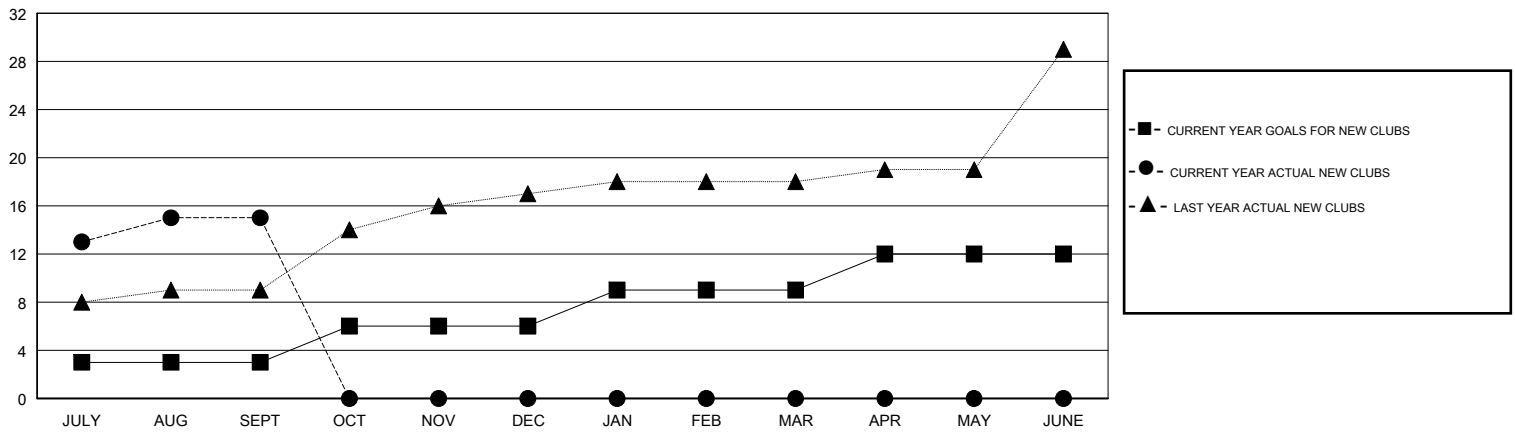
LOCATION INDIA

GMT CA

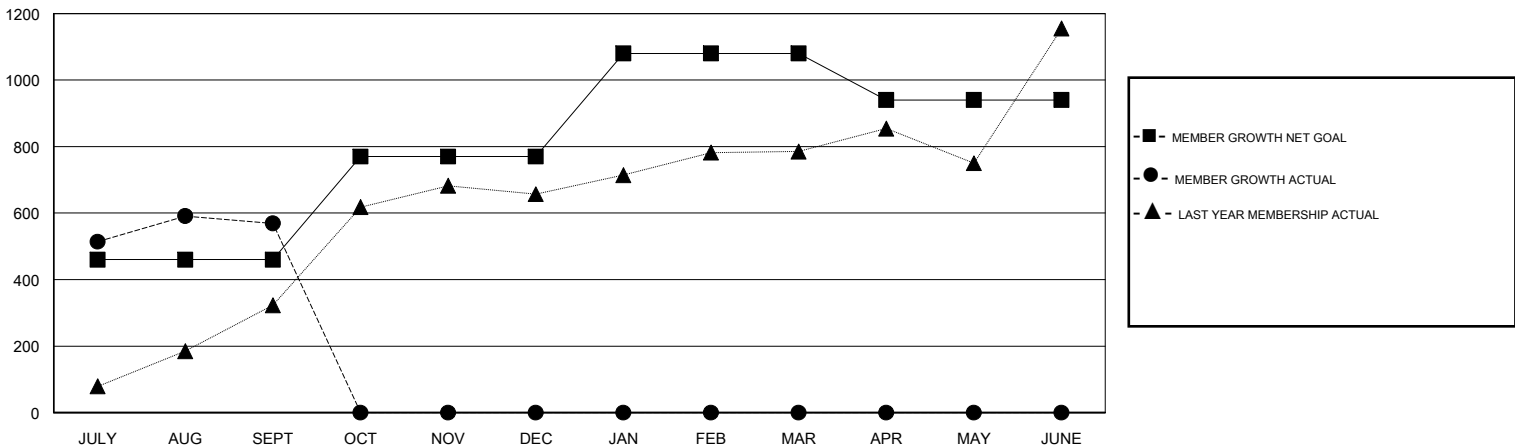
Clubs			
RESULTS FOR 2018-2019			
QUARTER	NEW CLUB GOAL	NEW CLUBS	DROPPED CLUBS
JULY/AUG/SEPT	3	15	1
OCT/NOV/DEC	3	0	0
JAN/FEB/MAR	3	0	0
APR/MAY/JUNE	3	0	0

Members			
RESULTS FOR 2018-2019			
QUARTER	MEMBER GROWTH NET GOAL	MEMBER GROWTH ACTUAL	DROPPED MEMBERS ACTUAL (including transfers)
JULY/AUG/SEPT	460	783	186
OCT/NOV/DEC	310	0	0
JAN/FEB/MAR	310	0	0
APR/MAY/JUNE	-140	0	0

GOALS AND ACTUAL NEW CLUBS CUMULATIVE



GOALS AND ACTUAL MEMBERS CUMULATIVE



DROPPED CLUBS: 1	87 CLUBS OF 218 ADDED 1 OR MORE NEW MEMBERS	<u>GENDER DISTRIBUTION</u>	
DROPPED MEMBERS		MALE	8,757 (90.58%)
DECEASED	6	FEMALE	911 (9.42%)
CLUB CANCELLED	0	Women Percentage Fiscal Year Goal: 3%	
OTHER	180	TOTAL FAMILY UNIT MEMBERS	1,254
TOTAL	186	CLICK HERE FOR CUMULATIVE MEMBERSHIP DATA	
		FAMILY MEMBERS PAYING HALF DUES	689